

YEAR 2015

CORE STATION 1022

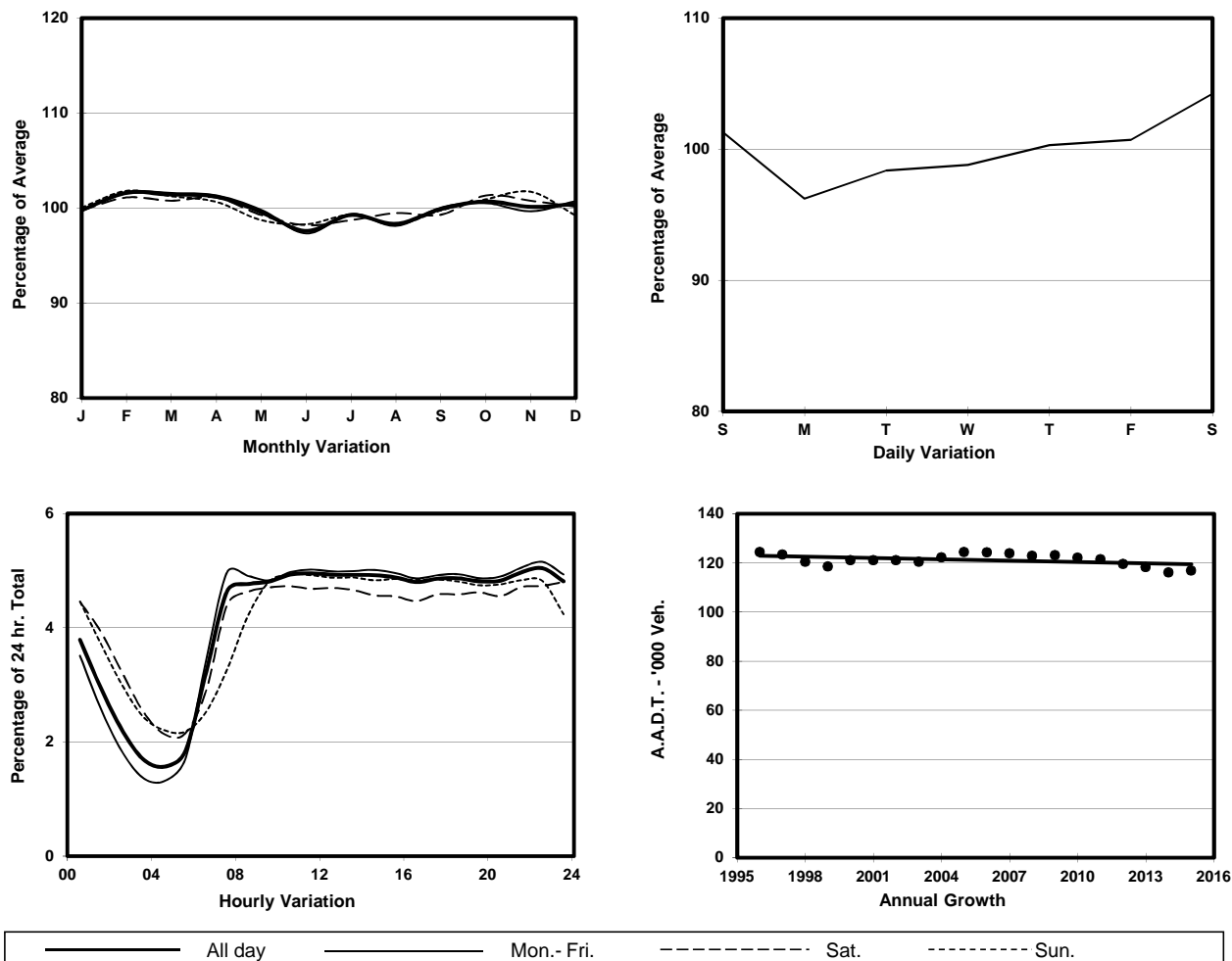
ROAD NETWORK MAJOR

ROAD TYPE URBAN TRUNK ROAD

LINK CROSS HARBOUR TUNNEL (from TOLL PLAZA to SOUTH PORTAL)



1. TRAFFIC FLOW VARIATION AND GROWTH



2. TRAFFIC CHARACTERISTICS (BY DIRECTION)

Parameter	All - Day	Mon. - Fri.	Sat.	Sun.
SOUTH BOUND				
A.A.D.T.	59250	58600	61400	60150
R 12 / 24 - %	58.5	59.4	55.5	57.3
R 16 / 24 - %	77.9	79	74.1	76.3
AM Peak Hour	0900-1000	0700-0800	0900-1000	0900-1000
One-way flow at AM peak hour	2960	2990	2960	3040
T - % (AM)	-	17.6	-	-
PM Peak Hour	1800-1900	1800-1900	1800-1900	1700-1800
One-way flow at PM peak hour	2870	2890	2770	2920
T - % (PM)	-	8.7	-	-
Prop.of commercial vehicles - 16 hr.	-	13.8	-	-
NORTH BOUND				
A.A.D.T.	57550	56830	60290	58180
R 12 / 24 - %	58.1	59.4	55	54.9
R 16 / 24 - %	78	79.7	73.6	74.2
AM Peak Hour	0900-1000	0700-0800	0900-1000	0900-1000
One-way flow at AM peak hour	2660	2750	2770	2650
T - % (AM)	-	17	-	-
PM Peak Hour	1700-1800	1700-1800	1700-1800	1600-1700
One-way flow at PM peak hour	2860	2880	2820	2820
T - % (PM)	-	18.1	-	-
Prop.of commercial vehicles - 16 hr.	-	16.7	-	-

3. OTHER INFORMATION AND COMMENT

4. Vehicle classification and occupancy - Monday to Friday

Time		Class of vehicle									
		Motor	Private	Taxi	Private	PLB	Goods veh.		Non	Fr. Bus	
		Cycle	Car		LB		Light	M & H	Fr. Bus	SD	DD
0700-0800	Pro	6.4	44.0	10.8	2.3	1.3	17.7	6.7	5.7	0.1	5.0
	Ocp	1.1	1.3	2.1	8.7	12.2	1.5	1.1	14.5	1.0	68.5
0800-0900	Pro	5.6	46.8	4.9	0.6	0.8	23.4	6.1	4.6	0.0	7.2
	Ocp	1.1	1.3	2.2	5.0	7.5	1.5	1.1	13.6	0.0	73.7
0900-1000	Pro	5.6	37.2	7.3	0.3	0.4	30.6	6.8	4.7	0.1	7.1
	Ocp	1.1	1.2	2.1	4.2	3.7	1.6	1.1	11.4	1.0	41.3
1000-1100	Pro	4.6	42.7	11.6	0.4	0.2	25.1	6.3	2.7	0.0	6.4
	Ocp	1.1	1.7	2.2	2.8	9.0	1.5	1.2	15.8	0.0	34.4
1100-1200	Pro	3.7	35.6	10.9	0.4	0.1	31.7	8.5	3.7	0.0	5.4
	Ocp	1.1	1.3	2.3	6.4	1.0	1.5	1.2	17.6	0.0	35.5
1200-1300	Pro	3.7	36.7	12.0	0.5	0.1	29.6	8.6	4.5	0.0	4.2
	Ocp	1.1	1.3	2.3	9.1	1.0	1.4	1.3	24.2	0.0	38.8
1300-1400	Pro	3.0	35.6	14.1	0.7	0.2	26.8	9.7	5.1	0.0	5.0
	Ocp	1.0	1.4	2.3	5.6	1.0	1.3	1.1	19.0	0.0	42.2
1400-1500	Pro	4.6	35.7	12.9	0.7	0.1	30.3	7.8	2.8	0.0	5.0
	Ocp	1.0	1.4	2.3	1.8	17.0	1.4	1.1	10.5	0.0	40.1
1500-1600	Pro	3.9	40.2	10.1	1.7	0.0	28.7	7.8	2.1	0.0	5.5
	Ocp	1.0	1.3	2.2	4.1	0.0	1.4	1.1	8.5	0.0	40.9
1600-1700	Pro	4.2	40.4	8.1	1.0	0.3	29.3	6.0	5.4	0.0	5.2
	Ocp	1.0	1.5	2.2	2.2	4.0	1.4	1.3	14.1	0.0	43.9
1700-1800	Pro	6.8	44.8	7.7	0.8	0.6	22.5	4.0	6.8	0.0	6.1
	Ocp	1.1	1.4	2.3	3.1	4.4	1.4	1.2	11.1	0.0	56.4
1800-1900	Pro	9.3	52.9	7.6	0.7	0.6	16.4	1.5	5.6	0.0	5.6
	Ocp	1.1	1.4	2.5	4.4	12.8	1.5	1.0	25.2	0.0	74.6
1900-2000	Pro	7.1	51.5	10.2	0.1	1.6	13.9	1.9	7.2	0.0	6.6
	Ocp	1.1	1.4	2.2	3.0	7.3	1.4	1.3	12.8	0.0	59.1
2000-2100	Pro	3.8	45.4	29.7	0.0	1.7	7.4	1.4	4.4	0.0	6.2
	Ocp	1.1	1.5	2.3	0.0	12.0	1.3	1.3	14.8	0.0	39.5
2100-2200	Pro	5.0	41.6	34.3	0.1	2.8	7.7	1.2	2.4	0.0	5.0
	Ocp	1.1	1.4	2.0	1.0	10.6	1.3	1.1	11.5	0.0	44.9
2200-2300	Pro	4.9	47.7	32.3	0.1	2.5	6.5	0.5	0.7	0.1	4.8
	Ocp	1.2	1.5	2.5	2.0	11.9	1.4	1.0	6.1	1.0	46.2
16 hours	Pro	5.2	42.5	14.0	0.6	0.8	21.7	5.2	4.3	0.1	5.6
	Ocp	1.1	1.4	2.3	5.1	9.9	1.4	1.2	15.3	1.0	49.4

Legend

Pro. Proportion of vehicles in % (Sum may not add up to 100% due to figure rounding)*

Ocp. Average occupancy of vehicles including both driver and passengers*

M&H Medium and Heavy

* All traffic data are collected from combined bounds except for one way traffic